

PRODUCTS

Cascades F2500-1 Wood Stove

The upgraded F2500-1 model offers significant enhancements that improve combustion and heat output while maintaining a cozy atmosphere. The wood stove is recertified to the highest safety and emission standards, producing an astonishingly low 1.4 g/hr of emissions. Featuring an exceptional 78% HHV efficiency, the F2500-1 qualifies for the U.S. Biomass Tax Credit—allowing more customers to experience unparalleled warmth, comfort, and efficiency in their homes. Contact: (604) 946-5155 or www.regency-fire.com.

Circle Reader Service No. 176



Frontier Collection

Inspired by the rugged beauty of the American West, the Frontier Collection by Lloyd Flanders offers a unique blend of rustic charm and modern technology. The aluminum frame is enhanced with a heat transfer faux-wood film to achieve the look of wood grain with less maintenance. These technologies not only enhance the aesthetic appeal of furniture but also contribute to a more sustainable and eco-friendly approach to design. Contact: (800) 526-9894 or www.lloydflanders.com.

Circle Reader Service No. 179



Introducing Seashell from Tangent Sustainable Lumber

Seashell is a fresh, new color option made with Tangent's patented

woodgrain technology, combining the aesthetics of natural wood with the strength and sustainability of recycled plastic lumber. This woodgrain pattern works beautifully in coastal settings as well as being a contemporary look for the backyard patio. Tangent now offers nine-dimensional woodgrain options including Antique Mahogany, Birchwood, Brazilian Walnut, Coastal Gray, Driftwood Gray, Natural Teak, Seashell, and Walnut. Contact: (630) 264-1110 or www.tangentmaterials.com.

Circle Reader Service No. 177

TANGENT
SUSTAINABLE LUMBER



Windsor

Designed by Site Li, an outdoor take on a historic icon. Considered to be America's first chair, Windsor chairs were popularized in the United States in the 1700s, experienced a

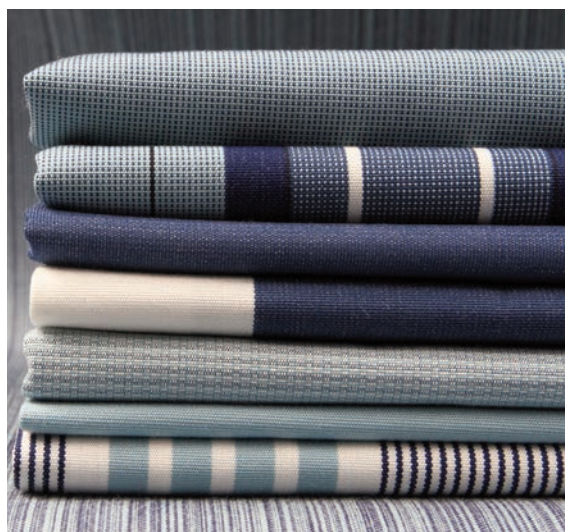
golden age in the 1800s, and became beloved once again around 1900. Depending on your finish and optional fabric, the Windsor can have a classic or modern appeal. Contact: woodard-furniture.com.

Circle Reader Service No. 180

Tempotest 54 Volume III Collection

For over 100 years, Tempotest has been the embodiment of style and innovation as a vertically integrated family-owned company. This season, Tempotest USA introduces the 54 Volume III Collection. The recent launch consists of over 50 SKUs of new solids, fresh stripe designs, and luxurious textures. Colors range from Turquoise, Indigo, Sapphire to Coral, Clay, Pewter, Mercury, and Onyx. All Tempotest Performance Fabrics are made with 100% solution-dyed acrylic fibers. Contact: (800) 543-0448 or www.tempotestusa.com.

Circle Reader Service No. 178



Aurora Dining Arm Chair

Immerse yourself in unparalleled luxury with Jensen Outdoor's newest marvel, the Aurora Dining Arm Chair. Meticulously designed by Achella Design, this 100% FSC-Certified Ipe Wood masterpiece fuses modern aesthetics with timeless comfort. Every curve, tactile armrest, and charcoal gray zinc-plated hardware detail echoes Jensen Outdoor's

commitment to sustainability and heritage. Choosing Aurora isn't just a design choice, it's an investment in our planet's future, wrapping conscious luxury living into a heirloom legacy. Contact: (800) 403-0403 or www.jensenoutdoor.com.

Circle Reader Service No. 181